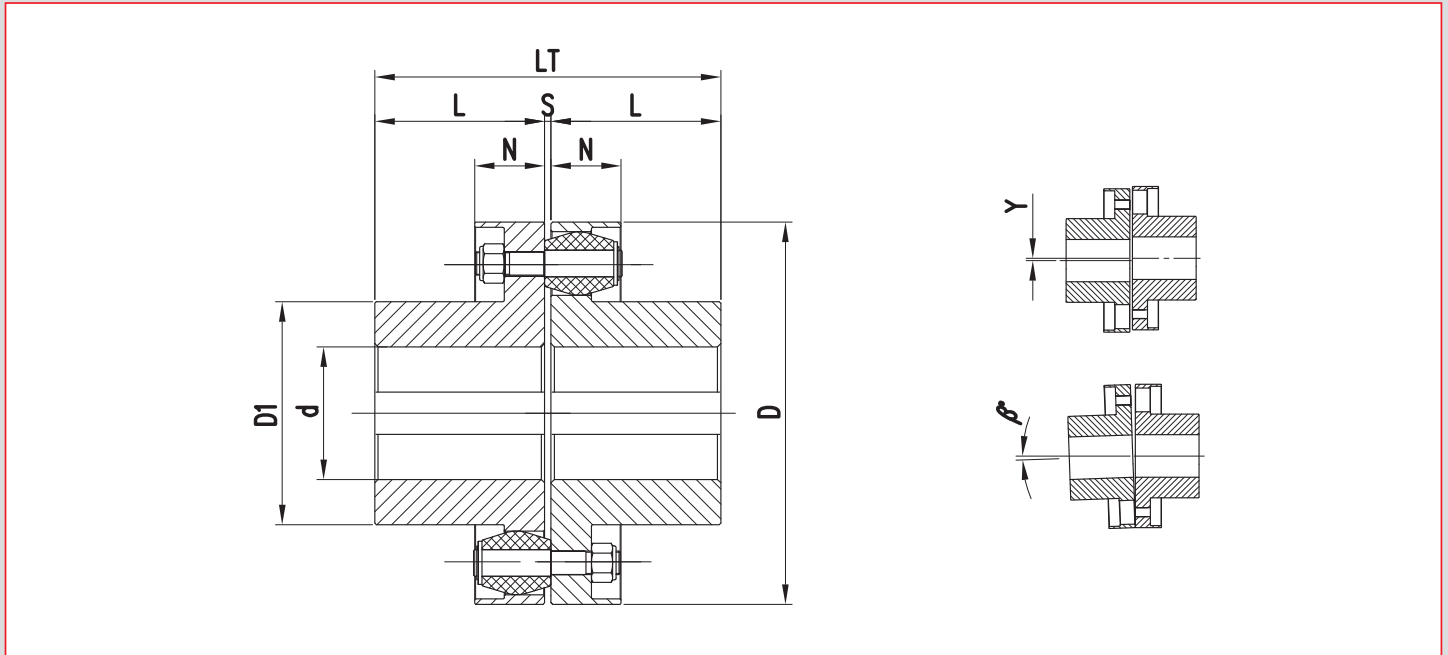


Elastic couplings with pins

PNHP series, standard version with high torques



TYPE PNHP	TECHNICAL DATA				DIMENSIONS (mm)							No. Pins	WEIGHT (kg)	MISALIGNMENT (±)	
	$\frac{N}{n} = \frac{\text{kW}}{\text{rpm}}$	Mt (Nm)	Max speed (rpm)	PD ² (kgm ²)	d max	D	D1	L	N	S ± ₀ ^{±2}	LT			y(mm)	β(°)
60	0,0073	70	16000	0,0004	17	60	26	25	15	3	53	4	0,5	0,2	1°
70	0,0126	120	13700	0,0005	22	70	35	29	17		61	6	0,8		
80	0,0199	190	12000	0,0030	24	80	40	35	24		73	8	1,2		
90	0,0346	330	10600	0,0068	26	90	39	45	28	93	8	1,9			
100	0,0501	480	9500	0,0108	35	100	50	50	36	103	10	2,6			
112	0,0701	670	8500	0,0170	40	112	62	55	45	113	12	4,0			
125	0,127	1200	7680	0,0318	45	125	65	60	28	126	12	5,3	0,4		
140	0,168	1600	6800	0,055	55	140	80	70	36	146	14	8,0			
160	0,220	2100	6000	0,108	60	160	85	80	45	166	12	11,5			
180	0,293	2800	5300	0,191	70	180	104	90	66	186	14	17			
200	0,335	3200	4800	0,329	75	200	106	100	80	206	12	23			
225	0,450	4300	4260	0,575	90	225	128	110	80	226	14	32			
250	0,754	7200	3840	0,948	95	250	130	120	54	250	12	41	0,8		
280	1,016	9700	3400	1,60	115	280	158	130	66	270	14	58			
320	1,435	13700	3000	2,94	125	320	172	140	80	290	12	81			
360	1,937	18500	2700	5,21	150	360	210	160	120	330	14	122			
400	2,209	21100	2400	8,36	160	400	224	180	80	374	12	165			
450	2,963	28300	2160	15,9	190	450	265	200	14	414	14	242			
501	3,895	37200	1920	26,4	200	500	280	220	14	454	16	310	1,2		
560	8,126	77600	1740	50,8	210	560	295	240	120	494	12	450			
630	10,99	105000	1560	80,5	250	630	360	260	135	534	14	650			
710	15,39	147000	1400	148,6	290	710	400	280	150	574	14	910			
800	20,52	196000	1200	192,2	310	800	430	300	18	614	16	1160			
900	27,54	263000	1080	438	330	900	460	320	150	658	16	1530			
1000	35,29	337000	960	697	360	1000	500	350	18	718	18	1950			
1120	45,03	430000	900	1081	400	1120	560	380	18	778	20	2530			
1250	56,23	537000	800	1676	440	1250	610	420	18	858	22	3270			

The Weight and the PD² are calculated considering coupling with pilot bores.

For the machining of the finished bores it is necessary to specify diameters and keyways with tolerances.

On request is possible to have one or both hubs with different lengths.