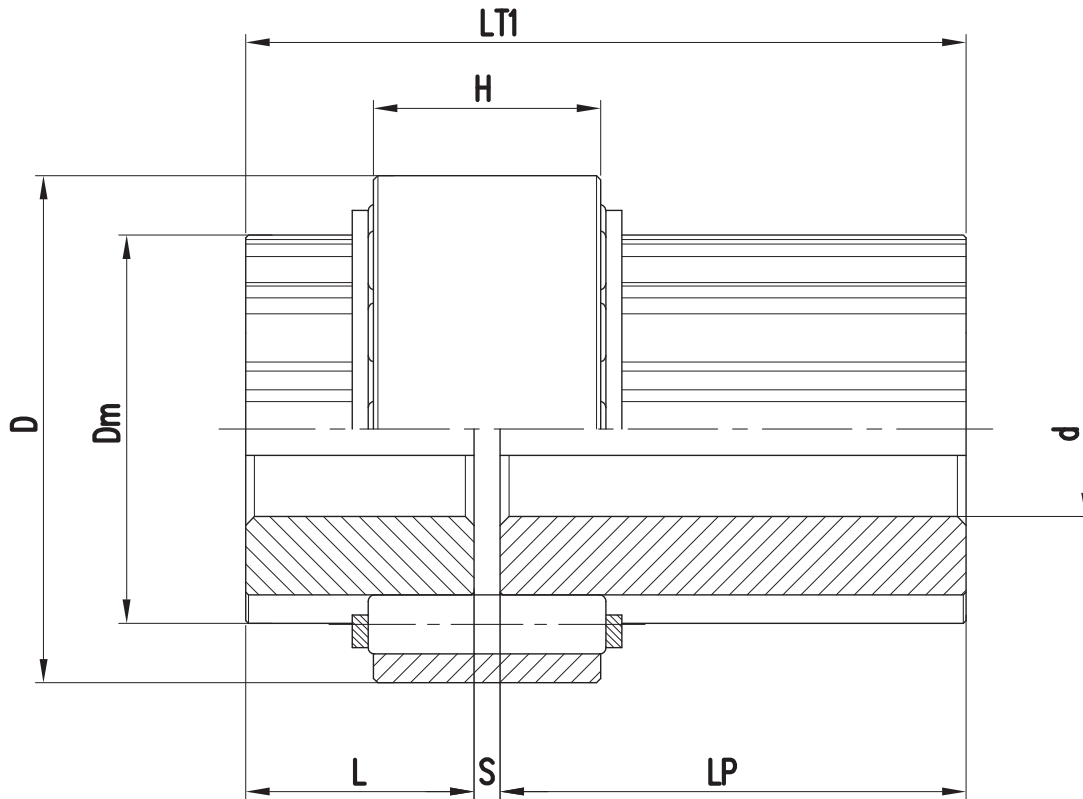


Elastic couplings in aluminum

**REVOLUTION TYPE REP** series, version with one extended hub

**MAINTENANCE  
WITHOUT MOVING  
CONNECTED MACHINES**



TYPE REP	TECHNICAL DATA				DIMENSIONS (mm)									No. elastic elements	WEIGHT (Kg)	MISALIGNMENT (±)	
	$\frac{N}{n} = \frac{\text{kW}}{\text{rpm}}$	Mt (Nm)	Max speed (rpm)	PD <sup>2</sup> (kgm <sup>2</sup> )	d min	d max	D	Dm	L	LP	LT1	s	H			axial (mm)	angular (°)
58	0,012	110	16470	0,00041	11	25	58	44	26	50	79	3	26	12	0,37	1	4°
67	0,019	180	14260	0,00099	13	30	67	51	35	60	99	4	35	12	0,56	1,2	
86	0,045	430	11100	0,0038	21	42	86	67	47	80	131	4	47	12	1,24	1,5	
104	0,089	850	9180	0,0110	26	50	104	81	55	110	169	4	55	15	2,24	2	
129	0,173	1650	7400	0,0340	36	65	129	104	65	140	210	5	65	15	4,88	2,5	

The Weight and the PD<sup>2</sup> are calculated considering coupling with pilot bores.  
For the machining of the finished bores it is necessary to specify diameters and keyways with tolerances.  
On request is possible to have one or both hubs with different lengths.